

## Chopped light amplifier WLV 3-Series



### Application

The WLV3 supplies the photoelectric barrier sender with current pulses, and amplifies and evaluates the signal from the photoelectric barrier receiver. It switches the output signal of the WLV to high or low (interrupted/uninterrupted).

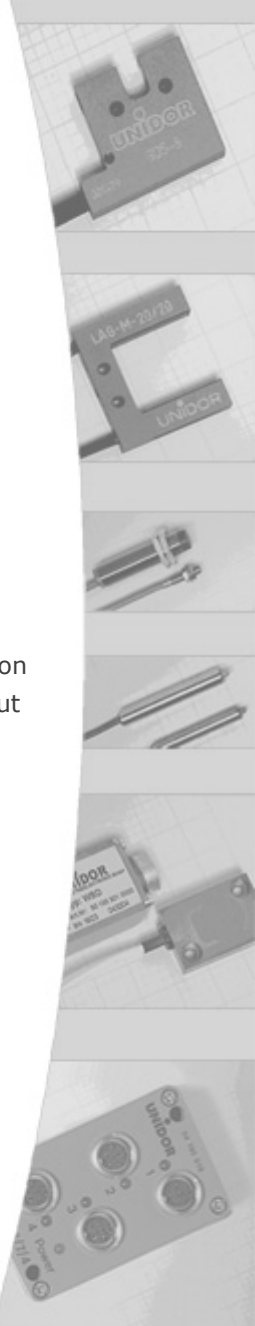
The output LED switches to red, when the light beam is interrupted.

The sensitivity is adjusted via potentiometer. Turning in a clockwise direction reduces sensitivity.

Minimum recognizable ridge with = 0,5 mm.

### Features

- Chopped light operation
- Yellow LED display dirt accumulation
- Green LED displays switched output
- Sensitivity adjustable via poti



TRsystems GmbH  
Freiburger Str. 3  
D-75179 Pforzheim

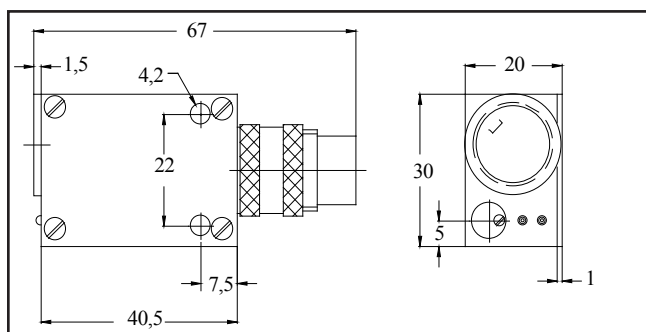
Tel +49(0)7231/3152-0  
Fax +49(0)7231/3152-99  
unidor@trsystems.de  
www.trsystems.de

# Chopped light amplifier WLV 3-Series

## Technical Data

Power supply:	+12VDC... +28VDC
Max. range:	100mA
Max. output range:	50mA
Ripple	10%
Switching output:	High signal at free light beam,
Operating temperature:	-20 °C... +60 °C
Housing: / Enclosure rating:	Aluminium, gold coloured anodized / IP 67
Switching frequency:	10 kHz

## Dimensions/Configuration



### WLV 3

#### Input connector 5-pin female

- 1 Sender cathode / receiver emitter
- 2 n.c.
- 3 n.c.
- 4 Sender anode
- 5 Receiver collector



#### Output connector 5-pin male

- 1 GND
- 2 24VDC
- 3 Output PNP
- 4 n.c.
- 5 n.c.



### WLV 3A

#### Input connector 7-pin female

- 1 Sender cathode / receiver emitter
- 2 n.c.
- 3 n.c.
- 4 Sender anode
- 5 Receiver collector
- 6 n.c.
- 7 n.c.



#### Output connector 5-pin male

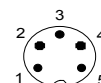
- 1 GND
- 2 24VDC
- 3 n.c.
- 4 Output PNP
- 5 n.c.



### WLV 3-UN

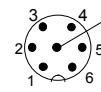
#### Input connector 5-pin female

- 1 Sender cathode / receiver emitter
- 2 n.c.
- 3 n.c.
- 4 Sender anode
- 5 Receiver collector



#### Output connector 7-pin male

- 1 Output PNP
- 2 n.c.
- 3 n.c.
- 4 n.c.
- 5 GND
- 6 24VDC
- 7 n.c.



## Order data

Article-No.	Short term	Type
51019021	WLV 3	Chopped light amplifier WLV 3
51019023	WLV 3A	Chopped light amplifier WLV 3A
51019022	WLV 3-UN	Chopped light amplifier WLV 3-UN